



PEBB 2022  
Open Enrollment:  
Medical and Pharmacy



# Synergy Network



Use our Synergy Network to get high-quality care close to home, which includes a diverse and wide selection of hospitals:

- Adventist Health (OHSU partner)
- Asante
- Bay Area Hospital
- Blue Mountain Hospital District
- CHI St. Anthony Hospital
- Columbia Memorial Hospital
- Good Shepherd Healthcare System
- Grande Ronde Hospital
- Harney District Hospital
- Kadlec District Hospital
- Lake Health District Hospital
- Legacy Health
- Legacy Silverton Hospital
- Mid-Columbia Medical Center
- **Oregon Health & Science University (OHSU)**
- PeaceHealth
- Pioneer Memorial Hospital – Heppner
- Saint Alphonsus Health System
- Salem Health Hospitals and Clinics
- Samaritan Health Services
- Santiam Hospital
- Sky Lakes Medical Center
- St. Charles Health System
- St. Luke’s Hospital
- Tillamook Regional Medical Center
- Trios Health
- Tuality Healthcare (OHSU partner)
- Wallowa County Memorial Hospital

## PCP 360

Use your PCP 360 for all of your primary care needs

Members must choose a PCP 360 for each covered individual for all their primary care needs

Choose a PCP 360 with Moda

A PCP 360 is a primary care provider who is willing to partner with you and provide high quality care with lower out-of-pocket costs

Each member of your family gets a choice

Each enrolled member can pick the same PCP 360 or a different one to receive in-network benefits for primary care services

No referrals

No referrals required to see specialists

# How to choose a Moda PCP 360



## Call Moda Health Navigators

844-776-1593. You can also message one instantly through your Member Dashboard or email them at [pebbcustomerservice@modahealth.com](mailto:pebbcustomerservice@modahealth.com)



## Log in to Member Dashboard

---

Each enrolled member can choose their own PCP 360

The subscriber of the plan may also choose a PCP 360 for all covered members, including your spouse and dependents, even if they are over the age of 18

# Member Open Enrollment Process

## Existing Medical PEBB Synergy Members

- If you have already selected a PCP 360, you do not have to re-select a PCP 360 unless you would like to change your PCP 360 (however, you can change PCP 360 providers any time during the year)

## New Members

- If you are a new member enrolling in a Moda plan, you will want to wait until you receive your welcome packet and your ID card to choose your PCP 360. You can create a login for your member dashboard by using the link you see here at <https://www.modahealth.com/memberdashboard> or call customer service.

# PCP 360 step by step instructions

To find a PCP 360 for yourself or another member on your plan, visit [modahealth.com/PEBB](http://modahealth.com/PEBB)

- Click Find Care link on the left side of the page
- Use the Search by network option to select the Synergy Network
- Then, click “Search by network”
- From the “Type” dropdown menu, choose PCP 360
- Enter your Zip code
- Choose “Search”
- You will know a provider is a PCP 360 if you see the “360” graphic under their phone number

The screenshot illustrates the step-by-step process for finding a PCP 360 provider on the modahealth.com/PEBB website. The interface is divided into several sections:

- Find Care Section (Step 1):** Located on the left side of the page, it includes a 'Find Care' link and a search bar. The text 'At Moda find great designed' is visible.
- Search by network Section (Steps 2-4):** This section allows users to select a network. The 'Network' dropdown menu is set to 'Synergy'. A 'Search by network' button is highlighted with a blue circle (Step 4).
- Search for a provider Section (Steps 5-7):** This section contains a form with the following fields:
  - 'Type of search' dropdown menu set to 'Medical'.
  - 'Network' dropdown menu set to 'Synergy'.
  - 'Name of provider' text input field.
  - 'Type' dropdown menu set to 'PCP 360' (Step 5).
  - 'Specialty' dropdown menu set to '- Any specialty -'.
  - 'Location' section with 'City' text input, '- State -' dropdown menu, and '97217' in the zip code field (Step 6).
  - '10 miles' dropdown menu for the search radius.
  - 'Accepting new patients' checkbox.
  - 'More search options' link.
  - 'Search' button (Step 7).
- Provider Details Section (Step 8):** A card showing provider information: 'Distance: 1.5 mi', '6445 N Greeley Ave', 'Portland, OR 97217', and '503-283-6607'. A '360' graphic is visible under the phone number (Step 8).

# Plan summary overview

(Synergy Network)

Medical	Full-time Medical Plan		Part-time Medical Plan	
	In-network,	Out-of-network	In-network	Out-of-network
<b>Deductible per person</b>	\$250	\$500	\$500	\$1,000
<b>Deductible per family</b>	\$750	\$1,500	\$1,500	\$6,000
<b>Out-of-pocket max per person</b>	\$1,500	\$4,000	\$2,500	\$8,000
<b>Out-of-pocket max per family</b>	\$4,500	\$12,000	\$7,500	\$13,500

Medical	Primary Care (PCP 360) <sup>1</sup>	Specialist Office Visit <sup>2</sup>	Urgent Care	Diagnostic Labs & X-ray	Emergency Room <sup>4</sup>
<b>Full-time Plan</b>	\$10	\$10	\$25	\$0	<b>\$150</b>
<b>Part-time Plan</b>	\$40	\$40	\$40	20% <sup>3</sup>	<b>\$150</b>

<sup>1</sup> Deductible is waived of the first 4 PCP visits, per plan year

<sup>2</sup> Referrals are not required for in-network specialist care

<sup>3</sup> Quest Labs – 0\$ Member Cost Share

<sup>4</sup> Copayments does not apply to out-of-pocket maximums

moda 360

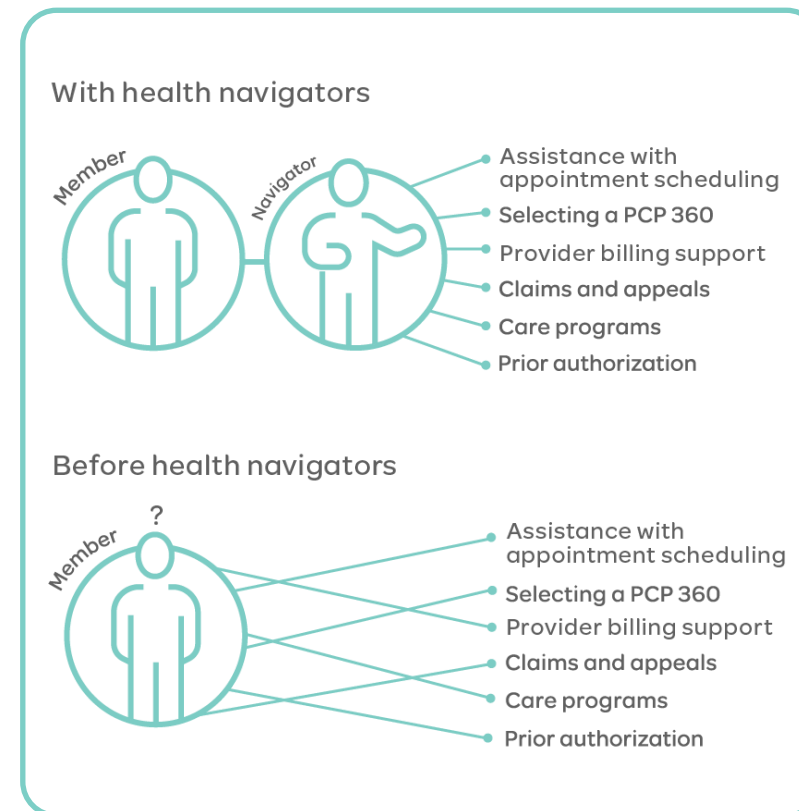


moda  
HEALTH



# moda 360 | Health Navigator team

- Moda 360 Health Navigators will help you navigate the sometimes-complex health care system
- This means every time you call the Moda Health PEBB member phone number, you will be connected with a Moda 360 Health Navigator
- The Health Navigators will assist you with any questions you may have, and will also serve as your guide to connect you with the care, resources and programs that best fit your needs





## Text a Doctor

- The CirrusMD app connects you with a doctor via text, 24/7 with no cost-sharing. The app allows members to:
  - Ask urgent or general health questions
  - Message, share photos or video chats
- Provides convenience and flexibility, and is available in all 50 states
- Providers can also prescribe medications
- Can access through Member Dashboard or the CirrusMD [website](#)



A specialized behavioral health support app that helps reduce stress, depression, anxiety and burnout with a 12-week treatment program

The program offers:

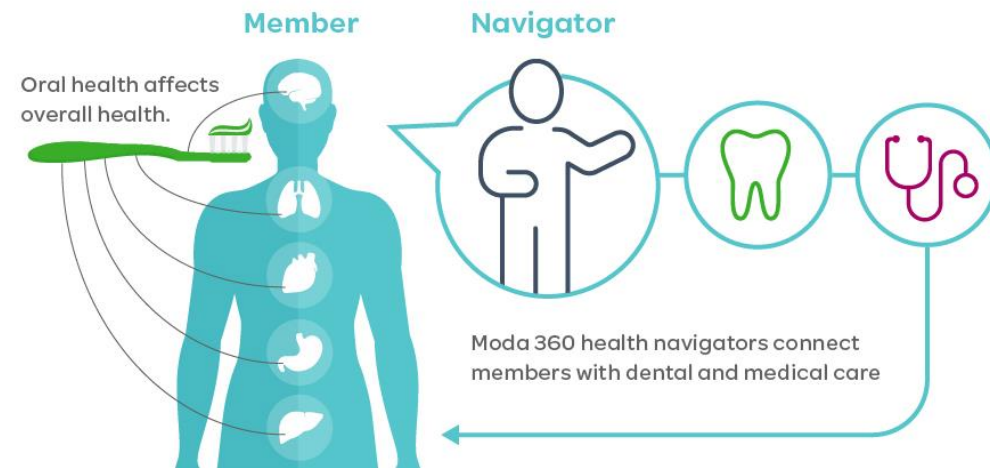
- Confidential access to a personal, remote therapist
- Mindfulness and behavioral techniques that can be practiced anytime
- Wearable biofeedback training device to help increase focus and manage stress
- Can access through Member Dashboard or the Meru Health [website](#)

# moda 360 | Dental integration

We are adding dental integration to our Moda 360 program. This means if you are enrolled in a Moda Health medical and Delta Dental plan, you will be connected to a Moda 360 Health Navigator

The Health Navigator can help members with:

- Claims and provider billing support
- Finding providers
- Connections to providers participating in the Health through Oral Wellness® program
- Connections to appropriate programs, tools and resources



# Other medical changes – (Effective 1/1/2021)

## Infertility Treatment

- Expanded coverage to include the following Assistance Reproductive Technology Services (ARTs):
  - IVF – In-vitro Fertilization
  - ZIFT – Zygote Intra-Fallopian Transfer
  - GIFT – Gamete Intra-Fallopian Transfer
  - PGSD – Pre-implementation Genetic Diagnosis
  - ICSI – Intracytoplasmic Genetic Diagnosis
  - Ovum microsurgery
  - Artificial insemination (including IUI)
- ART services will be covered at 100% up to the benefit maximum of \$35,000 for in and out-of-network providers.

## Alternative Care Services

- Removing \$1,000 overall limit
- Chiropractic Services: 20-visit limit
- Acupuncture Services: 12-visit limit
- Massage Therapy: \$1,000 maximum



## Pharmacy changes

Moda Health will change its pharmacy benefit manager to Navitus Health Solutions on January 1st, 2022.

All Moda Health Medical members will receive a new ID card with new information to share with their pharmacies.

If you have not yet received your new ID card, the following information will need to be updated at your pharmacy:

Bin: 610602

PCN: NVT

Rx Group: PEBB

You can download a digital copy of your ID card from your Member Dashboard at [modahealth.com/memberdashboard](https://modahealth.com/memberdashboard)

## Pharmacy – (Effective 1/1/2022)

Starting 1/1/2022 Walgreens will be an in-network pharmacy and CVS will be an out-of-network pharmacy. Members impacted by a pharmacy network change will be sent a letter at least one month in advance

- Please reference the letter for any action needed. You may receive more than one letter if you are affected by more than one change
- You can use the Pharmacy search tool in your Member Dashboard to search for network pharmacies

Costco will be an in-network mail order pharmacy in addition to Postal Prescription Services (PPS)

Members impacted by a formulary change will be sent a letter about the change two months in advance

- Please reference the letter for any action needed. You may receive more than one letter if you are affected by more than one change

Members with a current pharmacy prior authorization on file will not need to seek a new prior authorization

To continue to access your previous prescription claims history, please log in to your Member Dashboard prior to 12/31/21. Then select the Pharmacy tab on the top of the screen and click the MedImpact member portal link in the Resources box. [Click Here](#)

# Pharmacy benefits

Plan-year costs	Full-time	Part-time
Deductible per person		\$50
Deductible per family		\$150
Out-of-pocket max per person		\$1,000
Out-of-pocket max per family		\$3,000
	Full-time*	Part-time*
Retail (30-day supply)		
Value	\$0	\$0
Generic	\$10	\$20
Preferred	\$30	\$50
Mail & Preferred Retail (90-day supply)		
Value	\$0	\$0
Generic	\$25	\$50
Preferred	\$75	\$175
Specialty (30-day supply)		
Generic	\$100	\$100
Brand	\$10	\$20

\*Copays apply after the deductible has been met





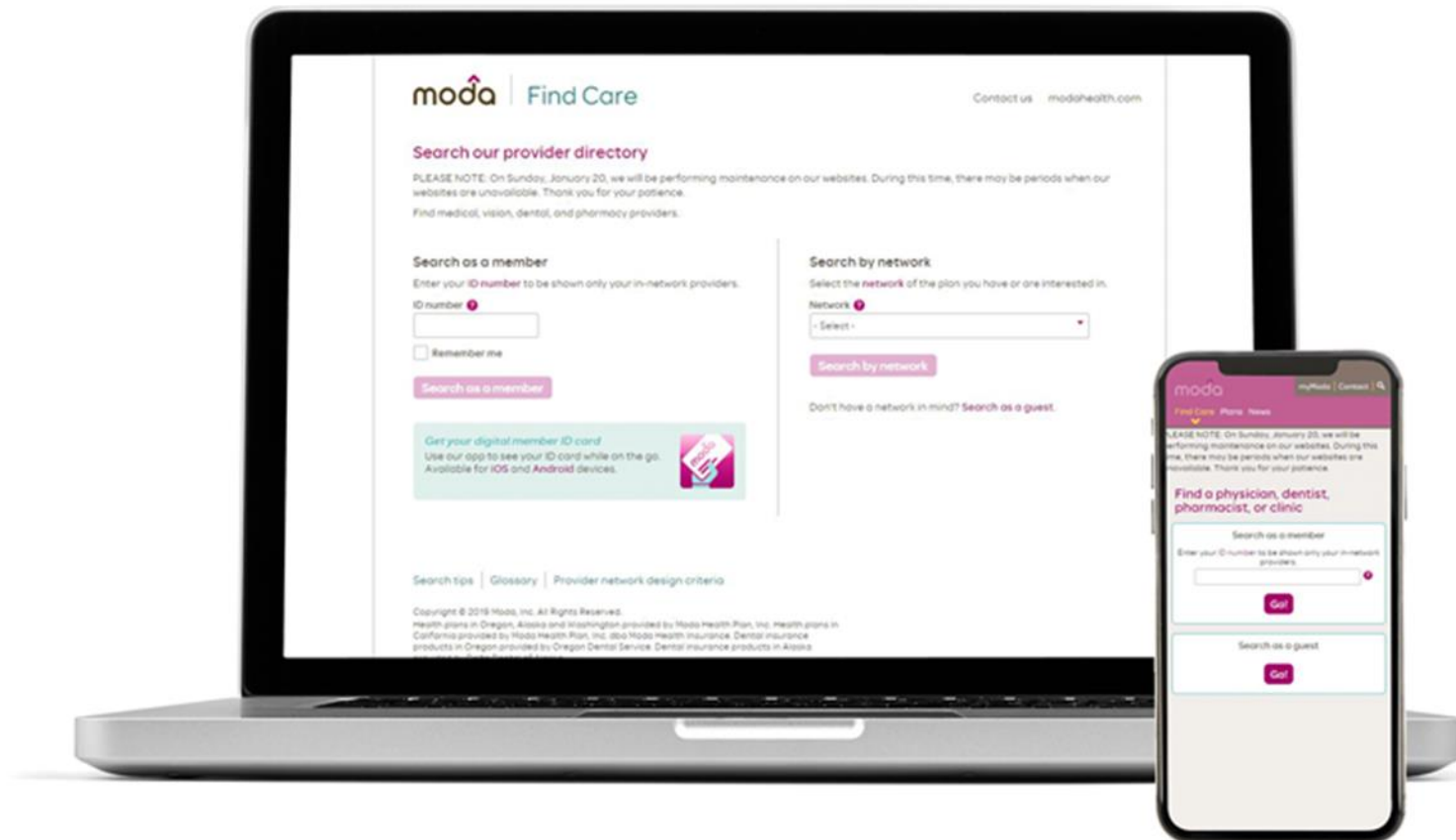
# Out-of-area coverage

## College students

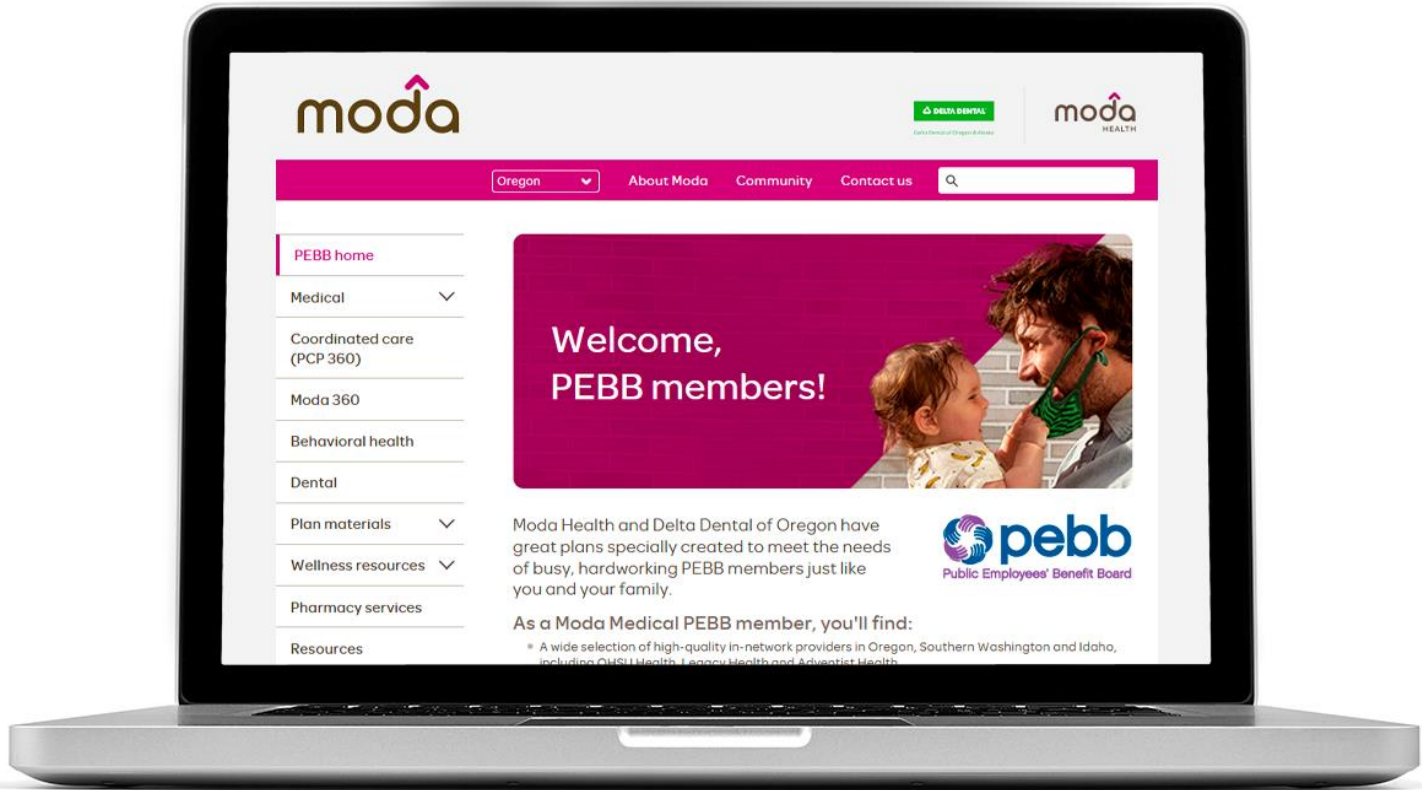
- Dependents who live *part-time* outside of the Synergy Network service area (like college students) can still choose a PCP 360 to receive in-network benefits for when they are back in the service area.
- The subscriber must update the dependent's address at [www.PEBBenroll.com](http://www.PEBBenroll.com) in order to allow them to access in-network benefits while living away from home.
- Dependents living outside the service area will use the travel network, First Health

# Find Care – Moda’s online provider directory

- Allows you to search as a “member” or by “network”



# PEBB dedicated website

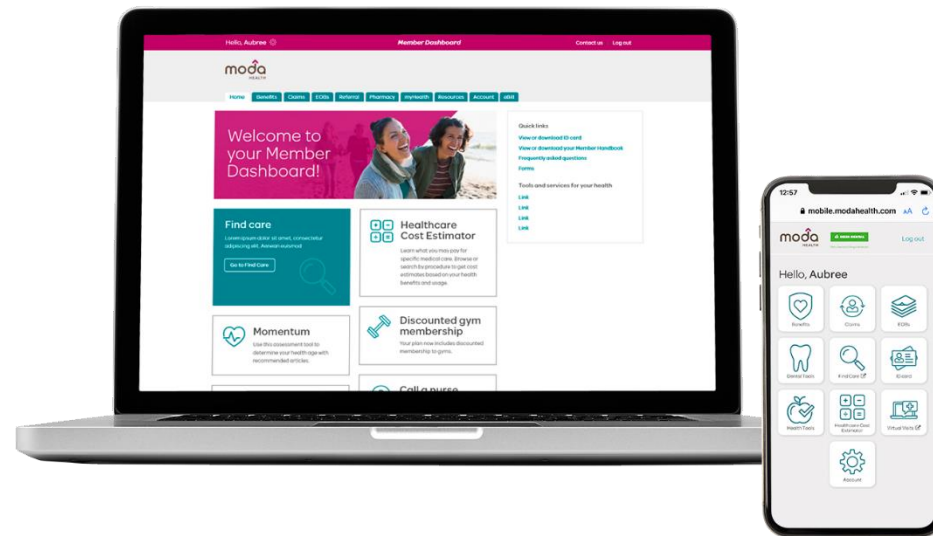


 [modahealth.com/pebb](https://modahealth.com/pebb)

# Member care resources

# Member Dashboard

- See your benefits & Member Handbook
- Check claims and review electronic explanations of benefits (EOBs)
- Connect with healthcare professionals on the phone or online
- Download your member ID card
- Access Moda health tools
  - Health coaching
  - Prescription Price Check
  - Healthcare Cost Estimator
  - Moda 360 digital tools
  - Chat with a health navigator
- PCP 360 selection



# Health Navigators powered by **moda**

Available Monday through Friday from 7:30 a.m. to 5:30 p.m. Pacific time.



Medical: 844-776-1593



Pharmacy: 844-776-1594

Or email our Health Navigator team at [PEBBquestions@modahealth.com](mailto:PEBBquestions@modahealth.com)

You can also message one instantly through your [Member Dashboard](#)

Thank you

